



PLEA FOR HELP. We could do with a few more volunteers to join our “Meet & Greet” team to assist with the smooth running of our monthly meeting. This is not an onerous task, and you would earn the satisfaction of knowing you have made a contribution to the operation of our u3a. If you are willing to help, please talk a to committee member or an existing member of the team.

IMPORTANT NOTICE:

When paying for outings via BACS can you please take care to enter the correct account details as people are paying into the main H&Ru3a bank account rather than the social account.

H&Ru3a OUTINGS – DETAILS ARE:

SORT CODE: 54-41-05

ACCOUNT NO: 32986742.

MAIN H&Ru3a ACCOUNT – DETAILS ARE:

SORT CODE: 54-41-05

ACCOUNT NO: 32986734.

Chat from the Chair:

As our chair is enjoying a well earned holiday, sunning herself on a Spanish beach, there is no chat this month.



NOTICE:

If you are coming to one of our monthly meetings, we offer the following guidance to make things run smoothly:

- ☆ **The doors are normally open from 1:30 so please do not arrive too early.**
- ★ **Please have your machine-readable membership cards ready as you enter. (If you lose your membership card a replacement can be issued for a £5 fee.)**
- ☆ **We ask you not to linger in the foyer after swiping in, but to make your way quickly into the hall.**
- ★ **As many of our members are less than fully mobile, we ask the more nimble among us to sit in the balcony where possible.**

NOTICE TO GROUP LEADERS

Would Group Leaders please note that the updated Guidelines have been published on our website and hard copies will be made available at the GL meeting on 2nd June.



Special Events – Turkey & Tinsel

Although I am trying to get the Hotel to give me some more Single rooms, all Singles have currently been allocated and only Twin & Double rooms now remain. The cost will be around £240/£250, to include the coach there and back, bed & breakfast on 3 days, with entertainment of each evening:

Christmas dinner with presents and crackers on the Saturday night with wine on the table for all 3 nights, and other goodies, such as tea & coffee on arrival a sherry reception on one night and Bucks Fizz on the Sunday evening, Unfortunately, I cannot confirm the final price until I know how many members have signed up. If you have not already done so, I do require a non-refundable deposit of £10 to secure your place on this brilliant weekend. I currently have 70 names on my list but can take another 20 or so. Please see me if you wish to be involved in this event.

Please phone or text Jean Mole on 07736 445 658 or e-mail to put your name down for this very popular trip. **A £10 non-refundable deposit is required**, with the balance due in October.

Jean Mole

Madam Tussauds

I am in the process of organizing a trip to Madam Tussauds in London on Wednesday 21st June. The cost will be £50, to cover both the coach and entry to the exhibition. In this instance payment will be required, in full, at the time of booking. If you are interested please contact Jean Mole on 01933 626 608 or peterandjeanmole@btinternet.com



Jean Mole



Home Dining

Due to a last minute cancellation there are now 2 spaces available for Tuesday 23rd May. Please contact Jean for details of the menu

I do have some spaces for June, as follows: - 1 space on Tuesday 27th, 4 spaces on Wednesday 28th & 2 spaces on Thursday 29th. The menu is Asparagus Soup or Poached Pear & Stilton/Sticky Soy & Ginger Pork Fillet or Chicken in Mushroom Sauce/Oranges in Caramel or Cherry Pie. Cost £12.50 to include a glass of wine and a cup of tea or coffee.

Contact me on 01933 626 608 to book a meal with good company and good food.

Jean Mole



The Mandarin @ Weston Favell - Thursday 8th June

I have booked this excellent "all you can eat" Chinese restaurant for 7:00pm as part of Thrapston u3a's monthly Lunch Club, as we do have an evening meal a couple of times a year. If



you have not already put your name down, please let me know as soon as possible if you wish to be included. If so, I do need a deposit of £5 (cash if possible) with the balance of £13 to be paid on the night.

Jean Mole



Wine Appreciation:

The group is suspended over the summer.

Steve Evans



Knit and Natter

Both knit and natter groups are going well, although we have had some breaks from it due to all of the bank holidays recently. We meet every Monday morning knitting a variety of things. Some people knit squares to be turned into lap blankets which we give to various local care homes. Some people knit their own projects. We have a couple of members that crochet too. Unfortunately, the groups are both full at the moment and I can't take anyone else. However, if interested, please contact me to go on the waiting list.

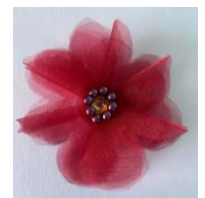
Kathy Arnold.



Handicrafts:

The next meeting of the Handicrafts Group will be on Thursday, 25th May at 2 pm at Rushden Bowls Club as usual.

We will be making an organza flower. You will need a cutting board, sharp scissors, pencil and Uhu glue if you have any. If not don't worry as all these things



can be provided so there is no need to buy specially.

Kathy and Jenny look forward to welcoming you for what we hope will be an enjoyable craft afternoon.

New members will be very welcome if you fancy trying the group out.

Jenny & Kathy



Garden Group:

The Garden group is in full swing now as we enter into our spring/summer session of outings, and we hope the weather is kind. Our visits are as follows: -

8th June. Beth Chatto garden Essex - waiting list only.

13th July. Deene Park Corby- spaces available

10th August. Cambridge botanical Gardens. Limited spaces available.

If you are planning to go to any of the above please book as soon as possible to avoid disappointment. Happy gardening.

Lorraine Brown, Group leader.



Bookmarks Again: The Secret Life of Bees by Sue Monk Kidd

This book was discussed at the recent meeting of the group.

It is set in the American South in the sixties, as the Civil Rights Act is introduced and the prospect of men landing on the moon is coming ever closer. It has been described as a young girl's coming of age story. The focus of the book is a 14-year old, Lily, who believes she killed her mother in an accident when she was very young and has since been raised by her abusive father. After a racial incident involving her black maid, Rosaleen, she and Rosaleen escape to an area that has links with her dead mother. They end up living in the house of three beekeeping sisters.

Responses to this book were mixed and overall tended to be on the negative side. The information about beekeeping was liked, as were the descriptions of the sisters' friends and fellow worshippers who had adapted their own interpretation the Catholic reverence for Mary, mother of Jesus. It was the powder of love that generated the upbeat ending, but it was felt that the serious issues of child abuse and racism were dealt with very superficially. As one member put it, it was a book to buy with a club card in an airport waiting lounge.

Ann Kemp



Monday morning football chat

Final meeting of the season will be on Monday 29th May 10am at Rushden Golf Club, Kimbolton Rd.

New Pundits always welcome!

Mike Gibbons 01933 631531



W.A.L.T: Would Anyone Like To:

If you are new to our U3A and maybe looking to make friends and socialise more, why not consider joining the "Would Anyone Like To?" Group. W.A.L.T. for short!

The group offers the opportunity to find people to share an event or activity with. ANYTHING AT ALL - because if you want to do it, then there's a good chance that others also will. What a shame it will be if you decide not to do something you really fancy, just because you don't want to do it alone. Contact us through the website or at the monthly meeting at The Citadel, Salvation Army, Church Street, Rushden.

Janet and Ken. Group Leaders.



Rock & Blues Group:

Our next meeting is on Thursday May 25th at 14:00 hours at the leader's house and the topic is the letter "F".

This is a friendly and relaxed group for those whose musical tastes are firmly rooted in the decades between the 60s and the 80s and who get together to listen to tracks they have chosen for a different topic each month.

We have space for new members so if you would be interested please let me know.

Jim Morrison



Computer Group:

The group meets in Rushden RC Church Hall on the 1st & 3rd Wednesdays each month from 10:00 till 12:00. The next meeting is Wednesday 19th May. For the next few sessions, we are revisiting topics requested by members, according to who is

present on the day.

Although recent attendance has been good and the topics well received, we can still find space for new and/or returning members.

For details contact Jim Morrison using the contact form on the H&R website.

Jim Morrison



Ten Pin Bowling:

On alternate Fridays at 11.00 hrs, a polite (though not necessarily when playing!) assemblage do their best to beat members of their own group and fellow teams. (See calendar on HR website for latest info. Latest scores for the group can be found on the group page.)

Whether you can knock down 10 pins or miss completely (and many do) then you are a bowler. . . though it is under-arm.

It costs just £6.55 for 2 games so what have you to lose? We're down at Hollywood Bowl in Wellingborough, adjacent to Tesco. You never know, you might 'strike' lucky! Please note that this group has a rotating leadership.

Group Leaders: Alan Collison, Martin Cromwell & Alan Nixon



Country Dancing:

On Wednesday 9th May we had our first ever mid-term lunch.

Ten members enjoyed a very sociable meal at Waitrose supermarket. Hope we will repeat. Looking ahead, our annual cream tea event will be held on Wednesday 12th July at 2.00 at

the very popular Mill tearooms in Ringstead. Some of our members enjoy a walk around Kinewell lake before tea. As usual past group members are always welcome. Would appreciate your names nearer the date. We hold our final summer meeting at Hensman hall on July 24th 2.00-3.45. Members bring nibbles to share. Refreshments and strawberries and cream provided. It is hoped to have live music. All are welcome. George Hearnden 01933 622827



History Group:

The first trip to Bourton on the Water and Chastleton House went ahead last Thursday. The next trip will be to Hever Castle on the 1st June. There are still a few places available - see Brian Turner after the meeting. The cost is £40.50

The trip to Anglesey Abbey is on Thursday 6th July. See Jean Mole for details.

The Windsor Castle trip in September is now full.

The meetings at The Masonic Hall will recommence in October. The speakers have all been arranged for the rest of the year. The December meeting will be Stanwick Handbells.

Brian Turner



Walking in Country Parks/Lunch

It was a lovely spring morning for our March walk around Harrold/Odell Country Park, birds were singing and spring flowers blooming. There was a good turn out for the walk and lunch after at The Bell in Odell. The April walk will be on the 16th, a week later than normal because of Easter and we are planning to walk at Sywell Country Park to see the bluebells with lunch at the Priory Welling borough always good value with a Carvery and varied menu available. Please book with Chris (Walk) and Linda (Lunch). Check out the calendar for May's venue(usually decided on the previous month's walk).

We walk once a month on the 2nd Sunday normally meeting at 10 30, usually walking about 2 -3 miles with Chris Ebden. Linda Walker takes the short walkers. We usually walk until the first person says they wish to return. So if you haven't walked for a while this is a nice safe way to start. We welcome those who want to just walk or those who just want to lunch. We usually lunch, whatever the weather, at 12 30 or slightly later in the winter. Please remember your u3a membership card. The leader will have a copy of everyone's contact details on the walk/lunch with them. Essential - please book with Chris Ebden for the walk.c.ebden@btinternet.com. Book with Linda Walker for lunch: spidar.girl@btinternet.com.

Sunday Lunch group:



We meet bi-monthly. Please check beacon calendar for news of the group. Early booking please as Sunday lunches are generally getting more popular. We restrict numbers enabling us to remain a friendly group.

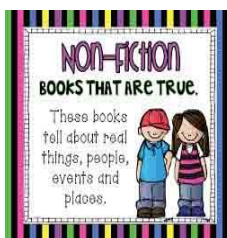
Book with Linda Walker for lunch: spidar.girl@btinternet.com

Maybe you need or could offer transport which would be very helpful. Venues usually require a small, non-refundable deposit. Please let us know if you are interested ASAP. Linda Walker spidar.girl@btinternet.com.



A Little Aloud:

A Little Aloud meets on the 2nd & 4th Wednesdays of the month at the leaders' home, between 10.15 -12.15, or on Zoom 10.00 & 10.45 -11.30. New members welcome.. Please contact leaders for more information. Linda and Chris Walker



Non-Fiction Group:

We have been meeting for over 2 years with members from H&R and Wellingborough u3as.

Our book choices are varied. Recently we have read biographies, travel and history, both newly published and from past years.

We meet at the leaders' home in Rushden on the 3rd Monday of each month 10.00-12.00, to discuss our choice of book and choose another. We use Zoom occasionally.

More information from Linda & Chris Walker: Grpscord@highamandrushdenu3a.org.uk

NOTICE:

Wellibus Trial – 6 month trial of the Rushden and Higham Wellibus.

As we have lost our local area Expressline bus the council are trialling a ring and book Wellibus similar to the Wellibus in Wellingborough. At present it has no planned route. so is very flexible. Please consider using the service.

it is a trial for 6 months. Use it or Loose it.

To join it is £15 – preferred payment by card over the phone 01933 223636 9-14 30 Mon-Fri. Ring if you have any questions. Cheques payable to Shire Community Services1-3 Orient Way Wellingborough NN81AF

Linda Walker

FIND THE ELEPHANT



u3a MONTHLY MEETINGS

Please note there is a small charge for non-members. Details can be found on our website or call 01933 522934 for further information.

Speakers

If you, or a friend, have had experience as a speaker at other groups on topics which you think would be of interest to our u3a members then please contact the Speaker Secretary.

Note: - The Speakers may be subject to change.

2023 NEW VENUE – SALVATION ARMY CITADEL, RUSHDEN		
15 th May	Phillip Caine	Barrow to Baghdad & Back Again
19 th June	Julie Kinnear	Wonderful Wicked Wallis
17 th July	Vince Eager	You're Never Too Old to Rock & Roll
21 st Aug	Dave Andrews	Richard III Man or Mystery
18 th Sep	Fran Sandham	Walking across Africa
16 th Oct	Martin Lloyd	Passports, Assassins, Traitors & Spies
20 th Nov	Malcolm Darroch	When the Chute Went Up (Lady Parachutist 1903)
11 th Dec	Roger Prescott	AGM & Jukebox Jury Christmas Special
2024		
15 th Jan	Vince Eager	What time's the Midnight Buffet?
19 th Feb	Bernard Lockett	Gilbert & Sullivan
18 th Mar	Paul Robbins	60s
15 th Apr	Susan Flipping	A Death in Time

GROUP LEADER CONTACT DETAILS –

In accordance with GDPR we don't publish contact details for group leaders on a publicly available website or newsletter. There is a contact form on the website which can be used to email group leaders and u3a officers.

If you wish to telephone a group leader you will need to log into Beacon at <https://www.u3abeacon.org.uk/u3aportal.php?u3a=118&sc=LUDE><https://www.u3abeacon.org.uk/u3aportal.php?u3a=118&sc=LUDE>. You will need to create a password the first time you use the members' portal and full instructions are available on our u3a website.



Clicking on the Higham & Rushden u3a groups link opens a page listing all our current groups and gives telephone numbers for each leader.

SAT QUESTIONS

As teachers across the country attest to the difficulty of this year's SATs papers, how you would fare. Answer the 10 questions below from previous papers to test your knowledge.

Year 6 pupils were left in tears after a series of difficult SATs papers.

Question 1

A box of crisps contains three different flavours. A quarter of the packets are prawn cocktail flavour. The probability of picking cheese and onion flavour is 30%. What is the probability of picking salt and vinegar flavour?

Question 2

Here is an equation.

$m - 2n = 10$ When $n = 20$ what is the value of m ?

Question 3

What is 10% of a half?

Question 4

Solve this equation. $7y + 12 = 5y + 40$

Question 5

Runa and Jon each start with the same number. Runa rounds the number to the nearest hundred. Jon rounds the number to the nearest ten. Runa's answer is double Jon's answer. Explain how this can be.

Question 6

You have 24 centimetre cubes. You use all 24 cubes to make a cuboid with dimensions 6cm, 2cm and 2cm. Write the dimensions of a different cuboid you can make using all 24 cubes.

Question 7

One gram of gold costs £32.94. What is the cost of half a kilogram of gold?

Question 8

You chose a number, then multiplied the number by 7. Then you added 85. Your answer was 953. What number did you start with?

Question 9

A machine pours 250 millilitres of juice every 4 seconds. How many litres of juice does the machine pour every minute?

Answers in the June newsletter.

GROUP DETAILS	VENUE	DAY/TIME
Check the group calendar on the website for further details		
A Little Aloud	Leaders home	2 nd & 4 th Wednesday on Zoom 10.00 & 11.00
Art for Fun	Waitrose Community Room	Alternate Mondays 14.00-1600
Badminton Beginners & Improvers	Pemberton Centre	Wednesday 13.00-14.00
Badminton for fun	Pemberton Centre	Tuesday 09.00-10.00 & Friday 12.00-13.00
Bookmarks Again	Waitrose Community Room	1st Monday of the month*
Canasta	Saxon Hall, Raunds	1 st & 3 rd Thursday 10.00-12.00
Computing/Technology	St Peters RC Church Hall Rushden	10-12am 1 st & 3 rd Wednesday every month
Country Dancing	Hensman Hall Chichile St. NN10 8HT	Alternate Mondays 2 00-3.30pm
Country Park Walks	Various Parks	2 nd Sunday 10.30
Cycling multi-Groups	Rushden Lakes	Every Monday 10.30 (Apr-Nov)
Digital Photography A	Rushden Hall	2 nd & 4 th Wed 10.00 to 12.00
Driving	On the Road	By request
Garden	Rushden Hall	2 nd Thursday 10.30-12.30
Golf	Various	Alternate Wed & Fri
Guitar Improvers	Rushden Windmill Club	Tuesday 4pm
Handicrafts	Rushden Bowls Club	4 th Thursday each month 2-4pm.
History Group	Rushden Masonic Hall	1 st Thursday each month 14:00
Home Dining	Various	Twice per Month varying days
Knit & Natter	Leader's Home	Alternate Mon 10.00-12.00
Mah-jong for fun	Waitrose Community Room	1st & 3rd Friday 19.00 – 21.00
Continued...		

GROUP DETAILS	VENUE/DAY	TIME
Check the group calendar on the website for further details		
MMFC	Rushden Golf Club	Weekly Mondays 10am
Non-Fiction Books	Leader's Home	3rd Monday 10.00-12.00
Play Reading	To be advised	1st Tuesday 13.15-14.15
Rock & Blues Appreciation	Leader's Home	Last Thursday of the month 2-4pm
Scrabble	Waitrose Community Room	2-4pm
Singing for Fun	Rushden Hall, Hall Park	Alternate Thu 14.00-16.00
Special Events	Various	Various
Sunday Lunch	Venue varies	Every two Months
Table Tennis	Pemberton Centre	Wed 12.00-13.00
Ten Pin Bowling	Hollywood Bowl, W'boro	Alternate Friday 1100-1300
Ukulele	Rushden Transport Club	13.30-15.30 Every Monday
Video Editing	Leader's Home	2nd & 4th Tues 10.00-12.00
W.A.L.T.	Various	Various
Walking	Various	Various
Wine & Dine	Various	Various
Wine Appreciation	Leader's Home	Suspended for summer months

BATS

WHEN DO BATS HIBERNATE?

Bats will generally hibernate from November onwards. There are still unanswered questions about where many bats go to hibernate. Bats may start feeding on warmer nights as early as March and will emerge fully over April.

WHAT TIME DO BATS COME OUT AT NIGHT?



This varies between bats but also depends on other factors including the cover around their roost and the prevailing weather conditions. The first species to emerge will start leaving their roost anytime from sunset onwards, while others prefer to wait for the cover of darkness. Bats will usually return to their roost in the hours before sunrise. There are many bats where I live and one can often see them wheeling around the house, looking for insects, just as darkness falls.

WHAT DO BATS EAT?

All bat species in the UK feed on insects, including midges, moths, beetles and flies. Bats elsewhere in the world can have different diets, including fruit and flowering plants. There are even three species of vampire bats in Central and South America that subsist on blood!

HOW LONG DO BATS LIVE?

The lifespan of a UK bat can vary a lot. The most common species, the pipistrelles, have an average lifespan of four to five years. The longest-lived species include Brandt's bat, which can live up to 40 years, and the greater horseshoe, which can make it to 30.



EDITORIAL

Having just returned from a short holiday in America, I wanted to write about how popular football (soccer in America) is becoming. I was astonished to see how many European matches (mostly English) were being aired on so many TV channels. It is also becoming more popular in schools where it is now being taught. I am not a lover of “the beautiful game” and very much in the minority, being unable to discuss the merits of the various teams and whether soccer or American football is better.

However, I cannot help but feel that soccer allows fans/spectators a more joined-up experience, having just two 45-minute halves plus any injury time or penalties. The game of football (American) itself is officially a 60-minute event, with four 15-minute quarters. According to statistics just how long a football game is, how long half-time takes, how much time the ball is actually in play, and how many commercials are fitted into a broadcast varies from match to match. Roughly 91 million people watched the 2021 Super Bowl, making it one of America’s most-watched sporting events. No soccer match has come close to that record in the US.



While reports on this vary depending on the sample size, the average NFL game reportedly takes 3 hours and 23 minutes to complete and includes numerous time-outs and 50 minutes of commercial breaks, but surprisingly, the game’s live-action only lasts 18 minutes.

I cannot but admire the staying power of American football devotees but wonder if the commercial aspect of the game could be changed to provide more football for the supporters and fewer adverts.

No wonder Soccer (real football) is strengthening in popularity.

